



Overview of Disaster Preparedness for Horse Facilities





Welfare & Safety of the Racehorse Summit VIII



Dr. Roberta Dwyer

Extension Veterinarian
University of Kentucky

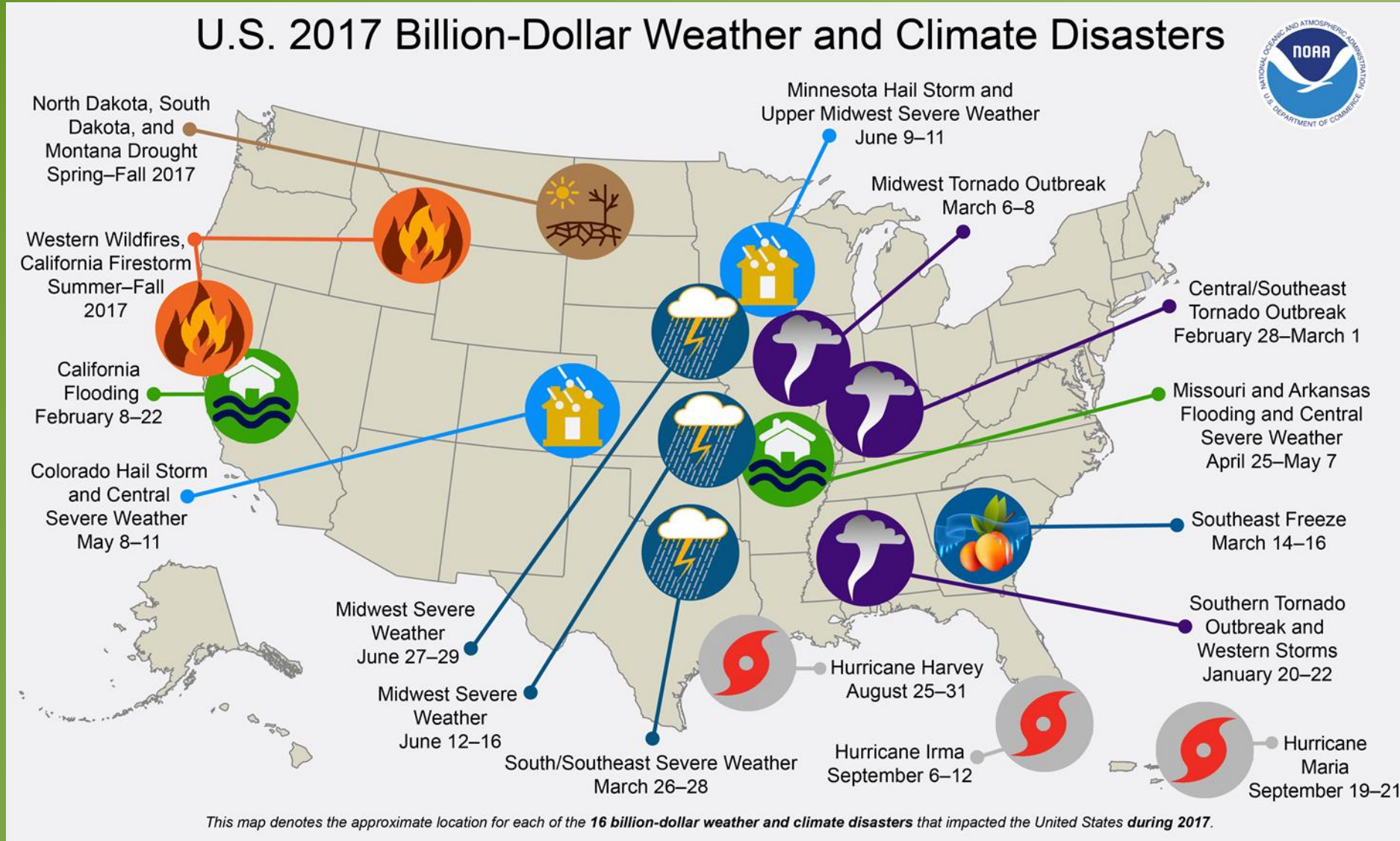
Failing to Plan is Planning to Fail

Roberta M. Dwyer, DVM, MS, DACVPM
Department of Animal and Food Sciences
University of Kentucky
Lexington, KY
rmdwyer@uky.edu

Problem: It won't happen to me



Billion Dollar Disasters 2017



West Liberty, KY March 2, 2013





(NOAA Photo Library, NOAA Central
Library; OAR/ERL/NSSL)



NOAA Photo Library, NOAA Central Library, NSSL



Flooding = #1 Killer



Horses standing in flood waters



Courtesy Dr. Rebecca
McConnico

Hurricane aftermath



Courtesy Dr. R. McConnico

Disasters

- ❖ All disasters start and end locally.
- ❖ #1 Rule: Human health and safety come FIRST!
- ❖ Plan for all-hazards
 - Natural
 - Accidental
 - Intentional

Disaster Logistics

- ❖ **Locally declared disaster**
 - Coordination through county EOC
- ❖ **Governor-declared disaster**
 - State resources available
 - Coordination through state EOC
- ❖ **Governor requests federal disaster declaration from President**
 - If granted, federal resources available

Emergency Support Functions

- ESF #1 – Transportation
- ESF #2 – Communications
- ESF #3 – Public Works & Engineering
- ESF #4 – Firefighting
- ESF #5 – Emergency Management
- ESF #6 – Mass Care & Emergency Assistance
- ESF #7 – Logistics Management & Resource Support
- ESF #8 – Public Health & Medical Services
- ESF #9 – Search & Rescue
- ESF #10 – Oil & Hazardous Materials Response
- ESF #11 – Agriculture & Natural Resources
- ESF #12 – Energy
- ESF #13 – Public Safety & Security
- ESF #14 – Long-term Community Recovery
- ESF #15 – External Affairs

Do you have

- ❖ A personal disaster plan
- ❖ A family disaster plan
- ❖ A farm/facility disaster plan
- ❖ A comms plan
- ❖ An evac plan
- ❖ Horses' ID



Planning

- ❖ Plan for the expected situations; you'll likely be prepared for the unusual/rare events
 - Loss of communications, including internet
 - Loss of electricity
 - Lack of personnel
 - Transportation



Communications



Family Disaster Plan



Preparedness

❖ Threats

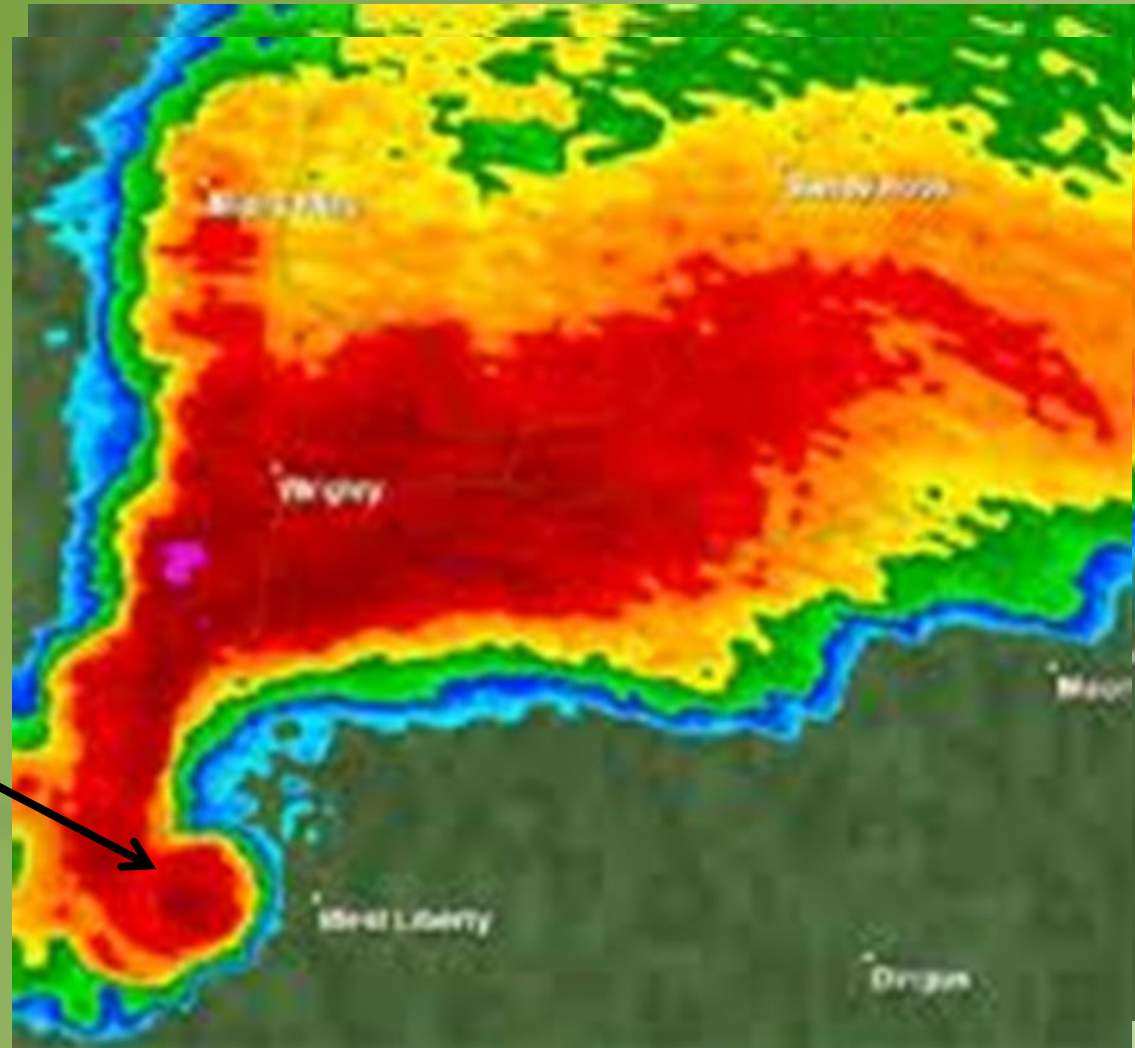
❖ Capabilities

- No electricity x 7 days
- No movement on/off farm x 7 days
- No telephone x 7 days
- 24 hour notice of evacuation (e.g., flood)
- Downed fencing/loose animals

Livestock fencing



Doppler Weather App



Mother Nature





The No Warning Disaster



Some Post-disaster Issues

- ❖ **Inability to return to home/farm**
- ❖ **Working in the dark**
- ❖ **Interruption of cash flow for affected businesses**
- ❖ **Loose livestock with no ID**
- ❖ **Casualties**
- ❖ **Contaminated water**
- ❖ **Physical stress, mental stress**

Failing to Plan is Planning to Fail

- ❖ **Having plans already in place can greatly aid in response and recovery from a disaster**
 - **Personal plan**
 - **Family plan**
 - **Farm plan**
 - **Facilities/event plan**

How do I start?

- ❖ Extension Disaster Education Network

- <https://eden.lsu.edu/>



- ❖ American Association of Equine Practitioners

- ❖ www.ready.gov

- ❖ Managers of facilities—work with local emergency manager and cooperative extension agent

Aftermath

- ❖ What community mental health resources are available?
- ❖ Kentucky Community Crisis Response Bd



Disaster Distress Helpline

- ❖ 1-800-985-5990 (24/7, 365 days/year)**
- ❖ Deaf/Hard of Hearing (TTY)**
- ❖ Spanish and other languages**
- ❖ Spanish speakers from Puerto Rico, text Hablanos to 1-787-339-2663**

